



Dennis Lee Brown

Drawing For Effect

The Technique Of Making Marks And Strokes

In our world of diverse forms of visual art, drawing is the building blocks of which is the foundation of these art forms come into existence. Drawing has more to do with how drawing mediums such as charcoal, crayon, graphite, pastels, or any other media produce marks on the drawing surface. Face it, visual art, like drawing, and paintings, are the two major forms of 2-dimensional fine art which apply to a 2-dimensional flat sometimes rough or smooth surface which acts as the support. Art supports are nothing more than the surface to which the mark has been affixed, and preserved in a special process to endure a lengthy time. Acid-free artist papers or a prepared wood panel or a glass pane, and the most used is the artist canvas, strengthened on a wood frame and primed two or three times with Gesso. This Gesso comes in a tint (white) or toned (black). The choice is made according to the artist's partial of what the rendition entails as he or she works toward the look and



EVENING FRUIT
16" h X 20" w Mixed Media Still-life on Canva
© Dennis Lee Brown 2020, Dennis's Fine Art (AAR) IMG-E0638

feel of the finished art. Throughout the entire drawing, the focus of the artist is how the finished master will feel and look, a bit more so what it will say about the artist and his/her work. However, before we can consider the finished artifact, we must start at the beginning of the drawing even as far back as the

preparation of the support. If the drawing support is a surface other than the artist's drawing paper, proper preparation is necessary to preserve and archive the art for a long life.

In today's market, there are hundreds of thousands of commercially prepared supports of sketches, drawings, and

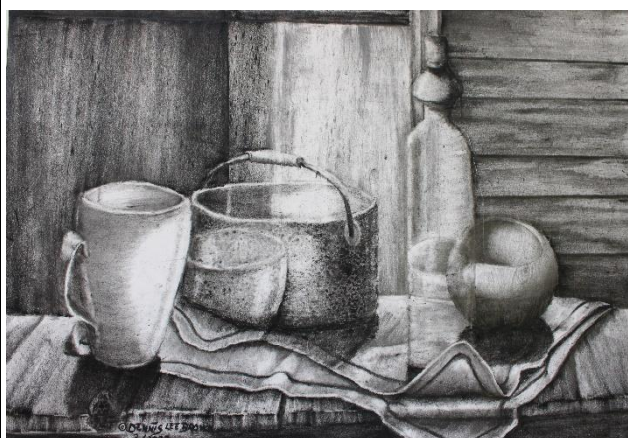
Continued on page

Art Techniques

Skillful Art Abilities

In today's market, there are hundreds of thousands of commercially prepared supports of sketches, drawings, and paintings. The choices can be overwhelming when choosing the correct one needed for your art project. See page 3 for information.

Page | 3



1: The Old Soup Pot and Containers
11" w X 14" h Still-life Graphite & Charcoal on Paper
© Dennis Lee Brown - Dennis Fine Art (AAR)
IMG-0060 12 of 12-595USD

In the Gallery

Coming Soon to the Gallery

**The Warm Winter
Collection of Drawings
Winter 2022 & Spring 2023**

Page | 4

Fine Art Techniques

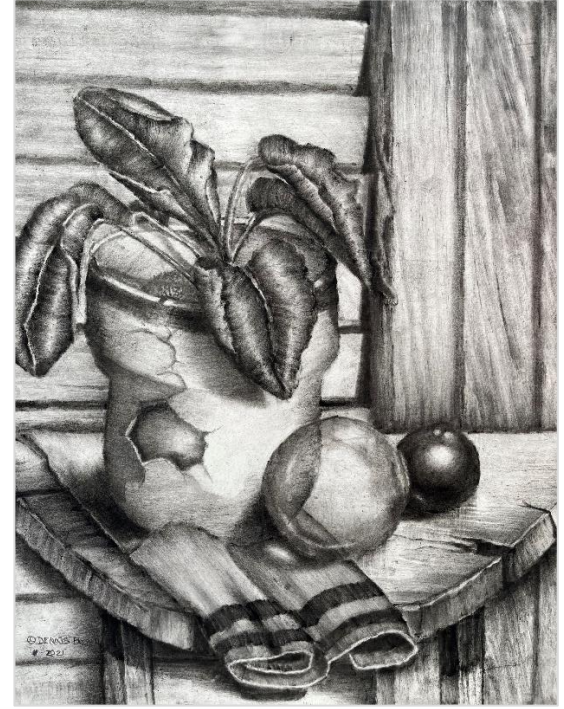
Various Art Supports

Here are a few support properties to consider:

- a) The size of the artwork
- b) A smooth or a teathed (rough) surface
- c) The material of the surface: (Board, Linen, Masonite. Canvas, artist's paper, or wood)
- d) Support surface preparation
- e) The underlayer color of the art
- f) Consider the grain pattern as to the effect it will have on the finished work. Now that full consideration has been given to the support, the next thing is the medium in which the art is to be rendered i.e., for sketching and drawing, the full standard range of artist graphite (H1 through B12),

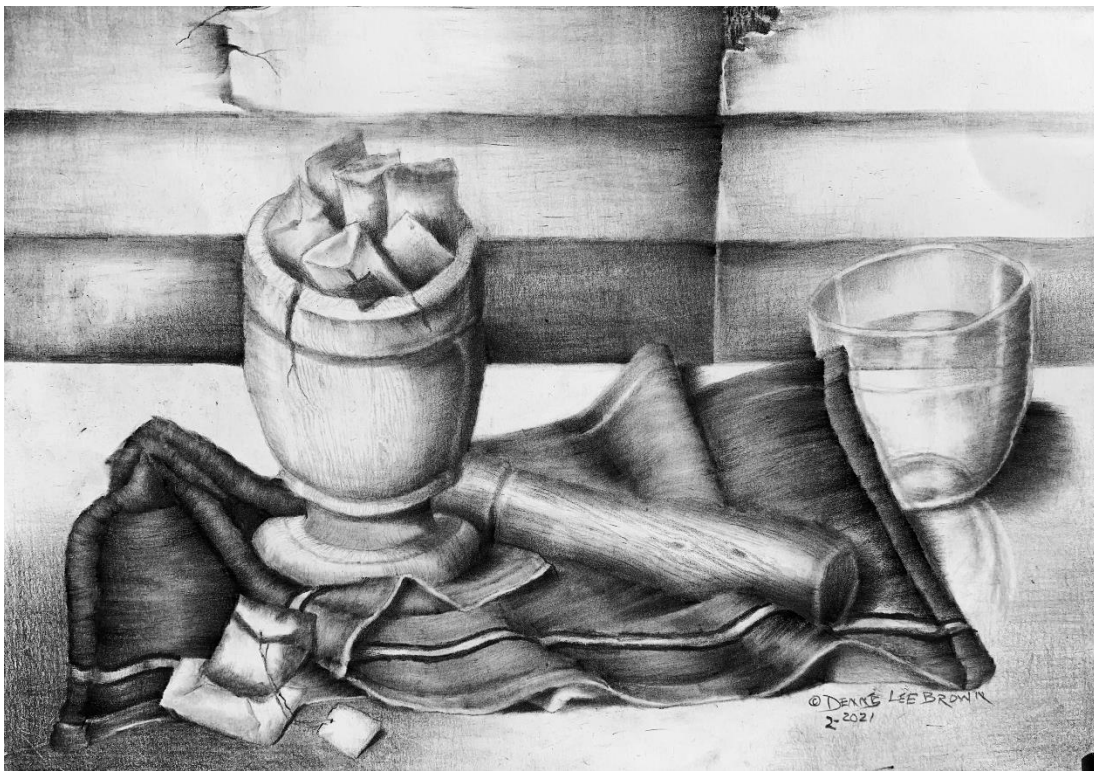
and a complete set of charcoal: Hard, Medium, and soft. In addition, other dry drawing mediums such as crayons, pastels, colored pencils, or graphite and charcoal powers may be combined to achieve special markings or stroke effects. To put this in perspective, any dry drawing medium may be combined to produce dramatic effects and details. This method of drawing is referred to as "Mixed Medium Composition".

When working with the mediums of charcoal and graphite alone, these pieces are colorless but can strike up a bold vivid contrast with a range of mid-tones/halftones (grays), (tints – (whites) lightness) and (tones – (black) darkness).



2: POTTED PLANT & BALLS
Still-life 14" w X 17" h Charcoal & Graphite on Paper
© Dennis Lee Brown 1/-2021
Dennis's Fine Art (ARR) IMG-1290-495USD
Collection of Winter Harbernation of 2021

"Beautify Your World with Art"



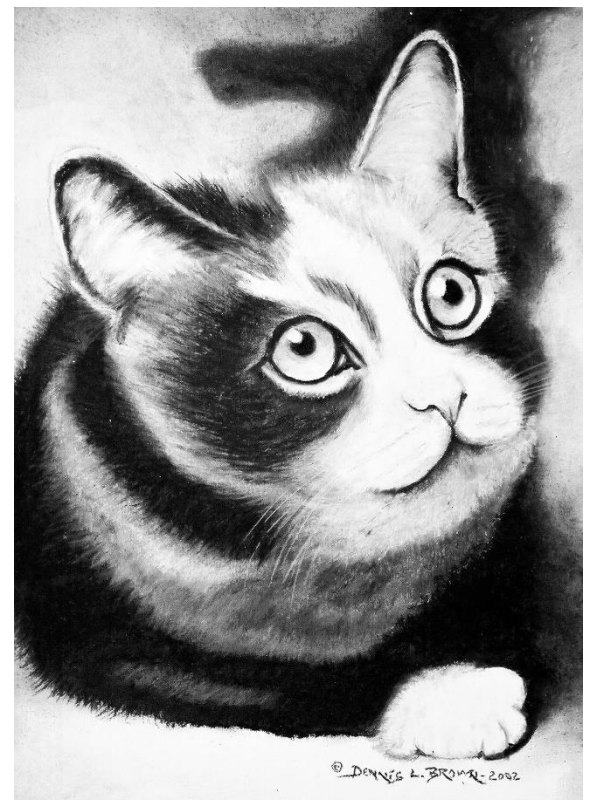
3: THE OLD SPICE MORTAR WITH TEA
14" w X 17" w Still-life Graphite on Paper
© Dennis Lee Brow 2/2021 Dennis' Fine Art (ARR) IMG-E0951-375USD

Take the Challenge

Take the challenge
Draw "Ralph the Cat"

Upload your drawing to the website for grading and viewing.

<https://www.dennisfineart.com/art-studies>



4: RALPH THE CAT
11" w X 14 h" Pet Portrait Oil Pastels on Paper
© Dennis Lee Brown – 2002
Dennis's Fine Art(AAR)
IMG 010-295USD

Skillful Art Abilities

Go Far Beyond Your Skill Level. Get out of the box, put your drawing in the circle of fine art drawings.

Want to turn your drawings into art? Then start by drawing Ralph the Cat

Visit & Take the Challenge
[Art Tutoring & Gallery|](#)
[DennisFine Art](#)

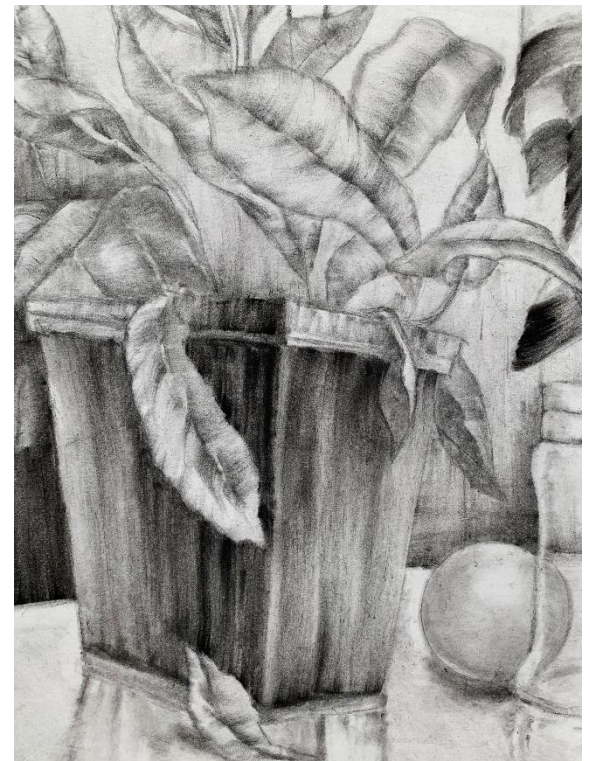
Skillful Drawing Abilities

Go Far Beyond Your Skill Level

Drawing is [visual art](#) that makes use of any number of drawing instruments to mark onto a two-dimensional medium. Commonly used instruments include [graphite pencils, pens, and ink, inked brushes](#), wax [color pencils, crayons, charcoals, chalk, pastels, markers, stylus](#). Drawing is defined as the marking of marks, lines, and shapes (some standard and non-standard), usually supported on, but not limited to various papers (an assortment of acid-free fine art drawing papers with a wide range of texture); although other materials such as [cardboard](#),

[plastic, leather, canvas, and board](#), may be used.

Drawing is a type of visual art in which individuals use instruments to mark on *paper, the most common surface*. For more advanced drawing, acid-free artist paper, primed Masonite, wood, canvas, and other two-dimensional surfaces prepared supports to which the art has been affixed and preserved). Marking on a surface is not necessarily art. In other words, doodling has never been considered artwork. On the other hand, sketching known as a quick drawing, which most people approve of and accept as a form of art. Considering the differences, this is what distinguishes one who draws from someone who assumes the title of being an artist.



5: WAVING PEACE LILY
17" h X 14" w Graphite & Charcoal on Paper
(cropped view) © Dennis Lee Brown 3/2021
Dennis's Fine Art (AAR) IMG-E09002-495USD

Bulletin from the Artist

The latest Updates



Dennis Lee Brown
Vivid & Diversified
Contemporary Artist

“B” (Soft - Black) Charcoal V.S “H” (Hard - Gray) Charcoal

Get to know your drawing charcoal. It will make all the difference in the overall value of the art as well as the contrast.

“**B**” **Charcoal** offers a rich black quality. It is incredibly soft charcoal, it remains smear-able, blends, and erases easily. Charcoal B is great for particularly expressive drawing. Soft charcoal works well for applying the darkest shades (*blackest*) darks to a drawing and can be blended out to a multitude of gray tones. Its adaptability makes it a great base for portrait drawing, especially when working on hairstyles and different skin tones. The “B” charcoal lifts easily with a kneaded eraser using the dapping method, and since it is so tolerant, it can work and can be reworked until the proper tonal value exists. The B-grade charcoal works for both undertones and final adjustments when the darkest shade needs to be applied.

Hb (Medium) Charcoal Charcoal’s HB is a medium-

soft/hard charcoal, preferably used in sketching and drawing. Charcoal “HB” ‘s excellent hold is perfect for combining and blending tones and retaining tonal details. Charcoal’s “HB” is a soft charcoal selected for sketching and drawing. Charcoal HB’s mark-staying power is perfect for maximum blending of shades and maintaining tonal detail. Work-up mid-tone values with HB charcoal and bring light and dark objects together. Charcoal’s HB is also a smart choice for layering. The use of a bristle paint brush can be used for adding texture

*“Drawing is a relaxing,
calm activity that
stimulates the mind.”*

- Dennis Lee Brown

and special effects, while a sable paint improves smoothing transitions. When layering and scrubbing, it’s best not to overwork with the paintbrush, as the tonal value can be lost. Hand and finger control with a light touch can obtain smooth softness and textures without damaging the paper or changing the drawing.



6: Potted loco Coco & Fruit 11" w X 14" h Still-life
Graphite & Charcoal on Paper © Dennis Lee Brown – Dennis Fine Art (AAR) IMG- 0046-1 of 12-395USD

The Warm Winter Collection of Drawings Winter 2022 & Spring 2023

During the hibernating long winter days and the frigid darkness of night, I gathered my drawing tools and headed for the table to create something amazing. While dealing with nerve pain and skin peeling on my legs due to Lymphedema

with continuous swelling coupled with sleeplessness, I relaxed by drawing still-life compositions. These drawings portray the setups of objects inspired by items in my home organized on various display places to create still-life arrangements.

These drawings portray the setups of objects inspired by items in my home organized on various display places, and with my imagination, I created still-life arrangements



7: Chillen on the Back-Hills Waters
11" w X 14" h Contemporary Art Graphite & Charcoal on Paper
© Dennis Lee Brown – Dennis Fine Art (AAR) IMG-0057-9 of 12395 USD

Dennis Fine Art Gallery
Gallery | Dennis Art Tutoring & Gallery
dennisfineart.com

The Dennis' Fine Art Galleries' Art News Newsletter is a bi-monthly new sheet focusing on drawings principles, techniques, and artists' methods of fine drawing. On page four is an editorial concerning the current exhibit in the Main Gallery.

Dennis Lee Brown is the creator and editor-in-chief of the official publication.

[Top](#)